



# Mount Mercy Academy

# Madrigal

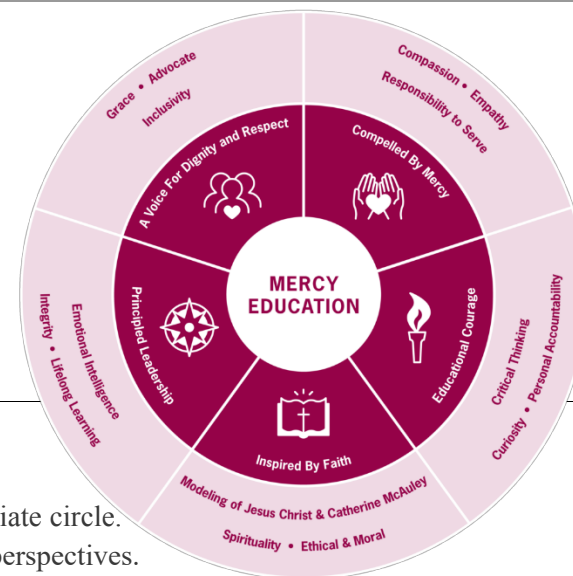







Cover Photography by  
Riley Melligan '26

## 2025 - 2026 School Calendar

Mount Mercy Academy | 88 Red Jacket Pkwy, Buffalo, NY 14220 | P: 716-825-8796 | F: 716-825-0976 | [info@mtmercy.org](mailto:info@mtmercy.org) | [www.mtmercy.org](http://www.mtmercy.org)

Our *Profile of the Graduate* is how students come to manifest and embody our Core Values. It's the culmination of everything a Mercy Education hopes to achieve. Throughout the student's journey, this blueprint defines the attributes they're expected to acquire and the steps they'll take to gain them. With the Profile of the Graduate, every experience and academic opportunity is linked to and aligned with our Core Values.



CORE VALUE	STUDENT ATTRIBUTES
 Compelled By Mercy	<p><b>Compassion.</b> Having concern for the needs of all, including those outside our immediate circle.</p> <p><b>Empathy.</b> Putting yourself in someone else's shoes to understand their feelings and perspectives.</p> <p><b>Responsibility to Serve.</b> Fulfilling the duty to not just care about others, but to take action on their behalf.</p>
 Educational Courage	<p><b>Curiosity.</b> Being open to other ways of seeing the world and exploring new ideas.</p> <p><b>Personal Accountability.</b> Staying disciplined in decision-making, proactive in correcting mistakes and self-motivated in our studies.</p> <p><b>Critical Thinking.</b> Gathering and objectively evaluating and analyzing information through reflection and reason.</p>
 Inspired by Faith	<p><b>Spirituality.</b> Developing a personal relationship with a loving, merciful God, expressed in service and respecting other faiths.</p> <p><b>Modeling of Jesus Christ &amp; Catherine McAuley.</b> Living life with abundant love, compassion, generosity and hospitality, demonstrating the strength of infinite mercy.</p> <p><b>Ethical &amp; Moral.</b> Following a personal code based on Gospel values that guides action and choices.</p>
 Principled Leadership	<p><b>Integrity.</b> Standing up for or doing what's right, including when it's difficult or unpopular.</p> <p><b>Lifelong Learning.</b> Always learning something new, gaining skills and wanting to know more, in all walks of life.</p> <p><b>Emotional Intelligence.</b> Recognizing and welcoming emotions within ourselves and others to build resilience and healthy relationships.</p>
 A Voice For Dignity and Respect	<p><b>Grace.</b> Allowing others to be fully human without judgment, while honoring what is God-like within each person.</p> <p><b>Advocate.</b> Being a forceful defender, supporter and sometimes spokesperson for the values and people we hold dear.</p> <p><b>Inclusivity.</b> Going beyond tolerance to embrace diversity, while accepting and serving with open arms.</p>

# Core Values

## Compelled By Mercy

Mercy students, in the spirit of our founder Catherine McAuley, are steadfastly determined to take Mercy into an interconnected world. Our shared sense of social consciousness is fortified by universal empathy and a conviction that all are worthy of God's mercy. This deep awareness and compassion move us to take principled action and serve the needs of others.

## Educational Courage

Mercy students welcome the challenge of pursuing their full potential in a culture of excellence, critical thinking and curiosity. Their multifaceted journey builds character while it builds essential skills. Our holistic program expects engagement, a thirst for knowledge and personal responsibility, while preparing students to thrive for a lifetime.

## Inspired By Faith

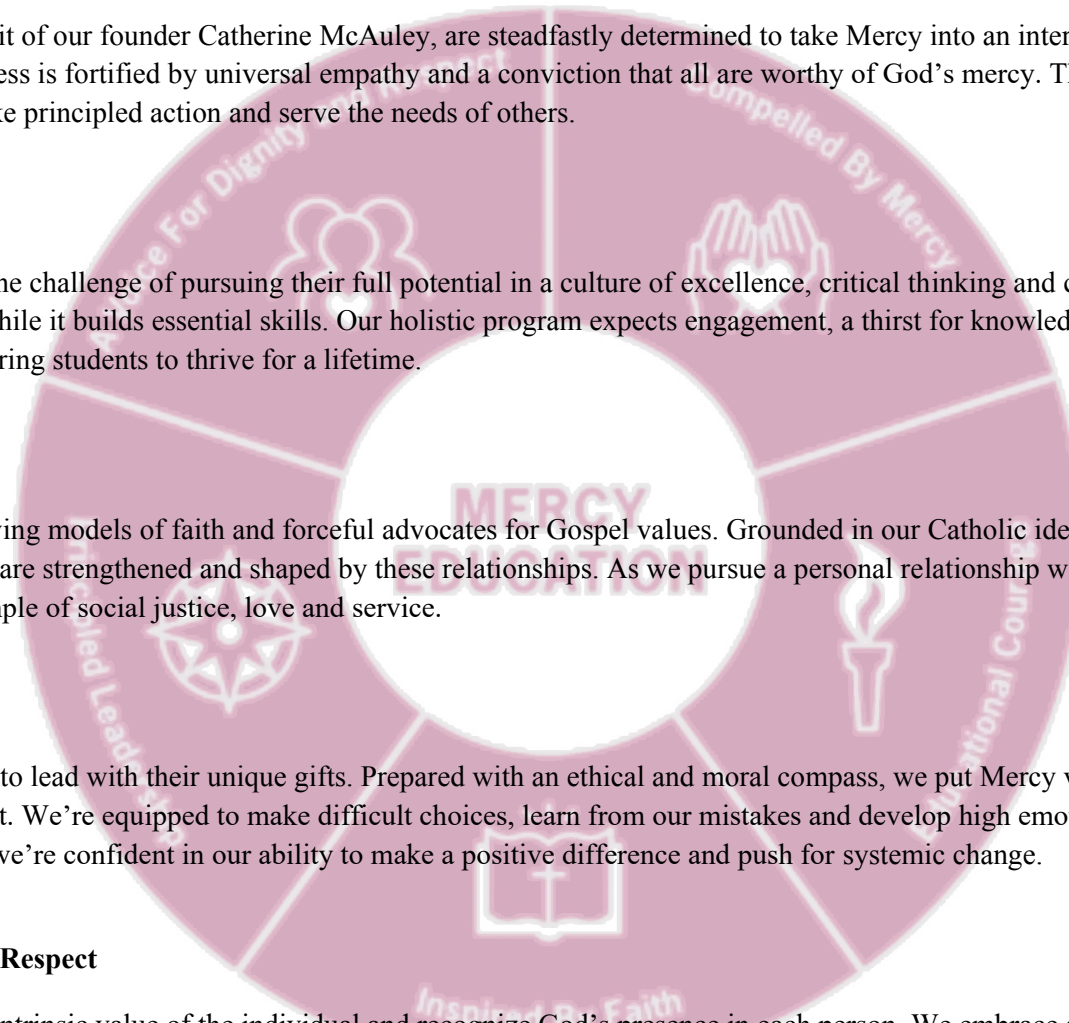
Mercy students become living models of faith and forceful advocates for Gospel values. Grounded in our Catholic identity in the Mercy tradition, we welcome all faiths and are strengthened and shaped by these relationships. As we pursue a personal relationship with God, we strenuously follow Jesus Christ's example of social justice, love and service.

## Principled Leadership

Mercy students are poised to lead with their unique gifts. Prepared with an ethical and moral compass, we put Mercy values into action and work assertively for what is right. We're equipped to make difficult choices, learn from our mistakes and develop high emotional intelligence. As an international community, we're confident in our ability to make a positive difference and push for systemic change.

## A Voice For Dignity and Respect

Mercy students honor the intrinsic value of the individual and recognize God's presence in each person. We embrace a global vision and value differences of opinion, and are unafraid to confront hostile or hurtful attitudes. By standing up for those who can't, we go beyond acceptance to help make sure everyone feels recognized and heard.



## A lesson learned from Dr. Heidegger

Her study was a mysterious place,  
With a mirror reflecting her youthful face.

A rose, now will bloom,  
The water of life, a magical vase.

She takes a sip, and time goes back,  
Youth returns, but wisdom flees.  
A lesson was learned, fleeting and clear,  
Age and wisdom, always near.

- Katelyn McCarthy '26



- Mercy Grotto photography by Riley Melligan '26

## From their unit on *Of Mice and Men*




- Drawing by Sophia Nowak '28



- Drawing by Leah Pukalo '28

# AUGUST 2025

Sunday	Monday	Tuesday	Wednesday	Thursday	Friday	Saturday																																																																																				
					<b>1</b> Building closed	<b>2</b>																																																																																				
<b>3</b>	<b>4</b> Camp Mercy	<b>5</b> Camp Mercy	<b>6</b> Camp Mercy	<b>7</b> Camp Mercy	<b>8</b> Building closed Camp Mercy	<b>9</b>																																																																																				
<b>10</b>	<b>11</b> Golf Tournament	<b>12</b>	<b>13</b> Class of 1965 Reunion	<b>14</b> Class of 1965 Reunion  Incoming student/parent sports meeting	<b>15</b> Building closed	<b>16</b>																																																																																				
<b>17</b>	<b>18</b> Fall Sports begin	<b>19</b>	<b>20</b>	<b>21</b>	<b>22</b> Building closed	<b>23</b>																																																																																				
<b>24</b>	<b>25</b>	<b>26</b> New Teacher Orientation	<b>27</b> Professional Development	<b>28</b> Professional Development	<b>29</b> Building closed  Class of 2005 Reunion	<b>30</b>																																																																																				
<b>31</b>	Year totals: 167 student days 175 teacher days	<div> <b>July 2025</b> <table> <tr><th>Su</th><th>M</th><th>Tu</th><th>W</th><th>Th</th><th>F</th><th>Sa</th></tr> <tr><td></td><td></td><td>1</td><td>2</td><td>3</td><td>4</td><td>5</td></tr> <tr><td>6</td><td>7</td><td>8</td><td>9</td><td>10</td><td>11</td><td>12</td></tr> <tr><td>13</td><td>14</td><td>15</td><td>16</td><td>17</td><td>18</td><td>19</td></tr> <tr><td>20</td><td>21</td><td>22</td><td>23</td><td>24</td><td>25</td><td>26</td></tr> <tr><td>27</td><td>28</td><td>29</td><td>30</td><td>31</td><td></td><td></td></tr> </table> </div> <div> <b>September 2025</b> <table> <tr><th>Su</th><th>M</th><th>Tu</th><th>W</th><th>Th</th><th>F</th><th>Sa</th></tr> <tr><td></td><td></td><td>1</td><td>2</td><td>3</td><td>4</td><td>5</td></tr> <tr><td>6</td><td>7</td><td>8</td><td>9</td><td>10</td><td>11</td><td>12</td></tr> <tr><td>13</td><td>14</td><td>15</td><td>16</td><td>17</td><td>18</td><td>19</td></tr> <tr><td>20</td><td>21</td><td>22</td><td>23</td><td>24</td><td>25</td><td>26</td></tr> <tr><td>27</td><td>28</td><td>29</td><td>30</td><td></td><td></td><td></td></tr> </table> </div>				Su	M	Tu	W	Th	F	Sa			1	2	3	4	5	6	7	8	9	10	11	12	13	14	15	16	17	18	19	20	21	22	23	24	25	26	27	28	29	30	31			Su	M	Tu	W	Th	F	Sa			1	2	3	4	5	6	7	8	9	10	11	12	13	14	15	16	17	18	19	20	21	22	23	24	25	26	27	28	29	30				2 - PD days   88 Red Jacket Pkwy., Buffalo, NY 14220 Last revision: 6/9/2025
Su	M	Tu	W	Th	F	Sa																																																																																				
		1	2	3	4	5																																																																																				
6	7	8	9	10	11	12																																																																																				
13	14	15	16	17	18	19																																																																																				
20	21	22	23	24	25	26																																																																																				
27	28	29	30	31																																																																																						
Su	M	Tu	W	Th	F	Sa																																																																																				
		1	2	3	4	5																																																																																				
6	7	8	9	10	11	12																																																																																				
13	14	15	16	17	18	19																																																																																				
20	21	22	23	24	25	26																																																																																				
27	28	29	30																																																																																							

## Partners

A promise eternal  
Stood before your face of gloom  
My rage infernal  
The consequence of our self-inflicted doom

The promise I keep to my heart  
Starts to fall apart  
Your gaze follows my every move  
How could you think  
This was what you had to do?

Rage turned to remorse  
All sympathy in the world is directed to you  
In this starscape, I remember  
I promised you

I grab your hand  
As I prepare for our self-inflicted doom  
In a way, this is what we planned  
I kept my promise to you.

- McKenna Cashion '26



- Novella Keem '25





- Kendall Markiewicz '25



- Novella Keem '25

# SEPTEMBER 2025

Sunday	Monday	Tuesday	Wednesday	Thursday	Friday	Saturday																																																																																											
	<b>1</b> Labor Day Building closed	<b>2</b> Student Orientation  New Family Orientation	<b>3</b> A First Day of Classes Opening Mass	<b>4</b> B	<b>5</b> C	<b>6</b> Class of 1975 50-year Reunion																																																																																											
<b>7</b> 1904 - Opening of the Academy  Mercy Tea	<b>8</b> D	<b>9</b> E	<b>10</b> F	<b>11</b> A	<b>12</b> B	<b>13</b>																																																																																											
<b>14</b>	<b>15</b> C	<b>16</b> D	<b>17</b> E	<b>18</b> F Board of Trustees mtg. 5:00 - 7:00 pm	<b>19</b> A 3pm Auditions for Play	<b>20</b>																																																																																											
<b>21</b>	<b>22</b> B	<b>23</b> C	<b>24</b> No Letter Day Mercy Day Feast of Our Lady of Mercy Mass & Senior Pinning Benefactor's Reception	<b>25</b> D Meet the Teacher Night	<b>26</b> E Trivia Night	<b>27</b>																																																																																											
<b>28</b>	<b>29</b> F Catherine McAuley's Birthday	<b>30</b> A				 																																																																																											
	Year totals: 167 student days 175 teacher days	<div> <b>August 2025</b> <table> <tr><th>Su</th><th>M</th><th>Tu</th><th>W</th><th>Th</th><th>F</th><th>Sa</th></tr> <tr><td></td><td></td><td></td><td></td><td></td><td>1</td><td>2</td></tr> <tr><td>3</td><td>4</td><td>5</td><td>6</td><td>7</td><td>8</td><td>9</td></tr> <tr><td>10</td><td>11</td><td>12</td><td>13</td><td>14</td><td>15</td><td>16</td></tr> <tr><td>17</td><td>18</td><td>19</td><td>20</td><td>21</td><td>22</td><td>23</td></tr> <tr><td>24</td><td>25</td><td>26</td><td>27</td><td>28</td><td>29</td><td>30</td></tr> <tr><td>31</td><td></td><td></td><td></td><td></td><td></td><td></td></tr> </table> </div> <div> <b>October 2025</b> <table> <tr><th>Su</th><th>M</th><th>Tu</th><th>W</th><th>Th</th><th>F</th><th>Sa</th></tr> <tr><td></td><td></td><td></td><td>1</td><td>2</td><td>3</td><td>4</td></tr> <tr><td>5</td><td>6</td><td>7</td><td>8</td><td>9</td><td>10</td><td>11</td></tr> <tr><td>12</td><td>13</td><td>14</td><td>15</td><td>16</td><td>17</td><td>18</td></tr> <tr><td>19</td><td>20</td><td>21</td><td>22</td><td>23</td><td>24</td><td>25</td></tr> <tr><td>26</td><td>27</td><td>28</td><td>29</td><td>30</td><td>31</td><td></td></tr> </table> </div>				Su	M	Tu	W	Th	F	Sa						1	2	3	4	5	6	7	8	9	10	11	12	13	14	15	16	17	18	19	20	21	22	23	24	25	26	27	28	29	30	31							Su	M	Tu	W	Th	F	Sa				1	2	3	4	5	6	7	8	9	10	11	12	13	14	15	16	17	18	19	20	21	22	23	24	25	26	27	28	29	30	31		September: 1 - PD day 20 - Student days 88 Red Jacket Pkwy., Buffalo, NY 14220 Last revision: 6/9/2025
Su	M	Tu	W	Th	F	Sa																																																																																											
					1	2																																																																																											
3	4	5	6	7	8	9																																																																																											
10	11	12	13	14	15	16																																																																																											
17	18	19	20	21	22	23																																																																																											
24	25	26	27	28	29	30																																																																																											
31																																																																																																	
Su	M	Tu	W	Th	F	Sa																																																																																											
			1	2	3	4																																																																																											
5	6	7	8	9	10	11																																																																																											
12	13	14	15	16	17	18																																																																																											
19	20	21	22	23	24	25																																																																																											
26	27	28	29	30	31																																																																																												



- Gabby Bauerlein '25



- Gabby Bauerlein '25



- Kendall Markiewicz '25

## Everlasting Home

Golden light glasses the hills  
A whisper moves through the tall grass  
Patience in every sway

The deepening water  
Mirrors the sky  
Soft, yet fierce in color


Pretty faces  
Modest smiles  
Stories anticipated in the hush of dusk

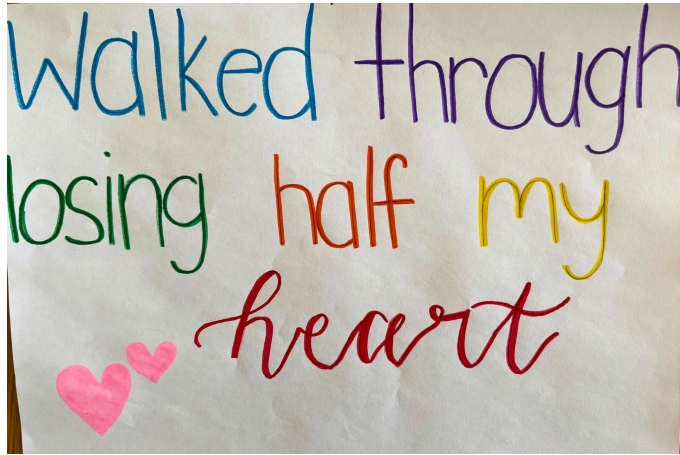
A growing land  
Passionate in its bloom  
Every aspect is a great symphony

Time here does not rush  
It lingers  
Beautifully a rhythm of its own

- Isha Mganga '26

# OCTOBER 2025

Sunday	Monday	Tuesday	Wednesday	Thursday	Friday	Saturday																																																																																											
			<b>1</b> B	<b>2</b> C Fall Open House 6-8pm	<b>3</b> D	<b>4</b> Fall Open House 10a-12p																																																																																											
<b>5</b>	<b>6</b> E	<b>7</b> F	<b>8</b> Testing Day- no letter day PSAT: Grades 9-11 College Visits: Grade 12 12:30p Student Dismissal 1:00p Faculty/Staff Mtg.	<b>9</b> A	<b>10</b> Academy Holiday No School/Building closed	<b>11</b>																																																																																											
<b>12</b>	<b>13</b> Indigenous Peoples' Day No School/Building closed	<b>14</b> B	<b>15</b> C	<b>16</b> D	<b>17</b> E Magic Money Raffle Drawing	<b>18</b>																																																																																											
<b>19</b>	<b>20</b> F	<b>21</b> A	<b>22</b> B WNY College Consortium 45-Min. Late Schedule	<b>23</b> C	<b>24</b> D Freshman Retreat	<b>25</b>																																																																																											
<b>26</b>	<b>27</b> E	<b>28</b> F	<b>29</b> A	<b>30</b> B	<b>31</b> Halloween C																																																																																												
	Year totals: 167 student days 175 teacher days	<div> <b>September 2025</b> <table> <tr><th>Su</th><th>M</th><th>Tu</th><th>W</th><th>Th</th><th>F</th><th>Sa</th></tr> <tr><td></td><td>1</td><td>2</td><td>3</td><td>4</td><td>5</td><td>6</td></tr> <tr><td>7</td><td>8</td><td>9</td><td>10</td><td>11</td><td>12</td><td>13</td></tr> <tr><td>14</td><td>15</td><td>16</td><td>17</td><td>18</td><td>19</td><td>20</td></tr> <tr><td>21</td><td>22</td><td>23</td><td>24</td><td>25</td><td>26</td><td>27</td></tr> <tr><td>28</td><td>29</td><td>30</td><td></td><td></td><td></td><td></td></tr> </table> </div> <div> <b>November 2025</b> <table> <tr><th>Su</th><th>M</th><th>Tu</th><th>W</th><th>Th</th><th>F</th><th>Sa</th></tr> <tr><td></td><td></td><td></td><td></td><td></td><td></td><td>1</td></tr> <tr><td>2</td><td>3</td><td>4</td><td>5</td><td>6</td><td>7</td><td>8</td></tr> <tr><td>9</td><td>10</td><td>11</td><td>12</td><td>13</td><td>14</td><td>15</td></tr> <tr><td>16</td><td>17</td><td>18</td><td>19</td><td>20</td><td>21</td><td>22</td></tr> <tr><td>23</td><td>24</td><td>25</td><td>26</td><td>27</td><td>28</td><td>29</td></tr> <tr><td>30</td><td></td><td></td><td></td><td></td><td></td><td></td></tr> </table> </div>				Su	M	Tu	W	Th	F	Sa		1	2	3	4	5	6	7	8	9	10	11	12	13	14	15	16	17	18	19	20	21	22	23	24	25	26	27	28	29	30					Su	M	Tu	W	Th	F	Sa							1	2	3	4	5	6	7	8	9	10	11	12	13	14	15	16	17	18	19	20	21	22	23	24	25	26	27	28	29	30							October: 21 - Student days  88 Red Jacket Pkwy., Buffalo, NY 14220 Last revision: 6/9/2025
Su	M	Tu	W	Th	F	Sa																																																																																											
	1	2	3	4	5	6																																																																																											
7	8	9	10	11	12	13																																																																																											
14	15	16	17	18	19	20																																																																																											
21	22	23	24	25	26	27																																																																																											
28	29	30																																																																																															
Su	M	Tu	W	Th	F	Sa																																																																																											
						1																																																																																											
2	3	4	5	6	7	8																																																																																											
9	10	11	12	13	14	15																																																																																											
16	17	18	19	20	21	22																																																																																											
23	24	25	26	27	28	29																																																																																											
30																																																																																																	



- Mara Lipinski '25

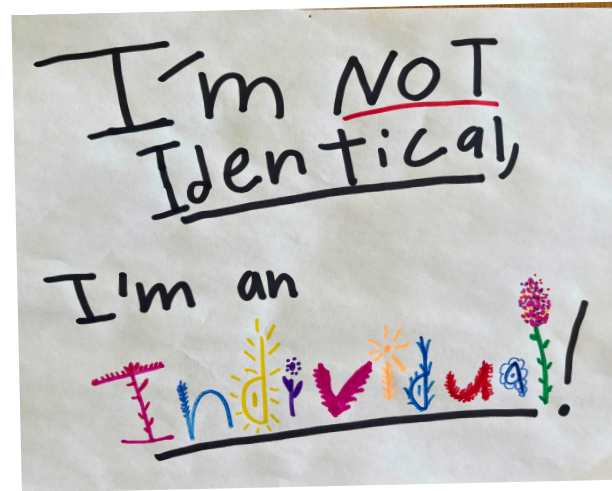
**The Sin of Living**

By: Ruby Griffin '26

Every prayer has become a request  
Every small word tarnished with my presence  
Every kind word like a deception

My guilt does not cleanse me  
My torment does not excuse me  
My selflessness does not fool me

I dread your whispers throughout the night  
Repulsed, I feel your eyes on me  
I know that I am a sinner, I cannot be saved.



- Zoe Czerniak '25

**What Do I Do With a Difference?**

By: Kaelen Zarzecki '26

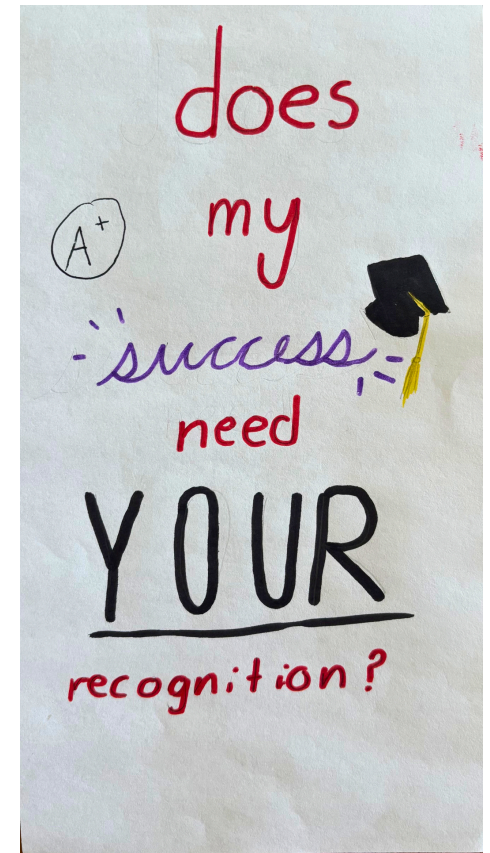
I bring forth it's issue and restore peace  
bringing satisfaction to the eye.

I leave an eye opening look  
with an open minded attitude.

I move forward with change then  
pushing the difference to a halt.

I see a difference as a stop and go pattern  
it will work its way to an end.

I look at it with a pondering mind sometimes.  
Bringing collaboration and understandment  
or peace and reaction can disappear the difference.



- McKenna Cashion '26

# NOVEMBER 2025

Sunday	Monday	Tuesday	Wednesday	Thursday	Friday	Saturday																																																																																				
 Mount Mercy Academy Buffalo, NY • 1908 Mercy Education System of the Americas						<b>1</b> All Saints day																																																																																				
<b>2</b> Daylight Saving	<b>3</b> D Admissions Exam Review Course	<b>4</b> E Admissions Exam Review Course	<b>5</b> End of Quarter 1 F Admissions Exam Review Course	<b>6</b> A Admissions Exam Review Course Mercy Honors	<b>7</b> B 12:45p Student Dismissal 1:00p Faculty/staff Mtg.	<b>8</b> SAT Exam																																																																																				
<b>9</b>	<b>10</b> No School/Building closed Mental Health Monday	<b>11</b> Veterans Day No School/Building closed	<b>12</b> C	<b>13</b> D	<b>14</b> E Connect Life Blood Drive Sophomore Retreat Trivia Night	<b>15</b>																																																																																				
<b>16</b>	<b>17</b> F Winter Sports begin	<b>18</b> A	<b>19</b> B	<b>20</b> C Thanksgiving Prayer Svc. Board of Trustees mtg. 5:00 - 7:00 pm	<b>21</b> D 1:15p School Performance 7:00pm Fall Play	<b>22</b> Admissions exam 7:00pm Fall Play																																																																																				
<b>23</b>	<b>24</b> E Fall Parent/Teacher Conferences	<b>25</b> F Fall Parent/Teacher Conferences	<b>26</b> No School/Building closed	<b>27</b> Thanksgiving No School/Building closed	<b>28</b> No School/Building closed	<b>29</b>																																																																																				
<b>30</b>	Year totals: 167 student days 175 teacher days	<div> <b>October 2025</b> <table> <tr><th>Su</th><th>M</th><th>Tu</th><th>W</th><th>Th</th><th>F</th><th>Sa</th></tr> <tr><td></td><td></td><td></td><td>1</td><td>2</td><td>3</td><td>4</td></tr> <tr><td>5</td><td>6</td><td>7</td><td>8</td><td>9</td><td>10</td><td>11</td></tr> <tr><td>12</td><td>13</td><td>14</td><td>15</td><td>16</td><td>17</td><td>18</td></tr> <tr><td>19</td><td>20</td><td>21</td><td>22</td><td>23</td><td>24</td><td>25</td></tr> <tr><td>26</td><td>27</td><td>28</td><td>29</td><td>30</td><td>31</td><td></td></tr> </table> </div> <div> <b>December 2025</b> <table> <tr><th>Su</th><th>M</th><th>Tu</th><th>W</th><th>Th</th><th>F</th><th>Sa</th></tr> <tr><td></td><td></td><td>1</td><td>2</td><td>3</td><td>4</td><td>5</td></tr> <tr><td>7</td><td>8</td><td>9</td><td>10</td><td>11</td><td>12</td><td>13</td></tr> <tr><td>14</td><td>15</td><td>16</td><td>17</td><td>18</td><td>19</td><td>20</td></tr> <tr><td>21</td><td>22</td><td>23</td><td>24</td><td>25</td><td>26</td><td>27</td></tr> <tr><td>28</td><td>29</td><td>30</td><td>31</td><td></td><td></td><td></td></tr> </table> </div>				Su	M	Tu	W	Th	F	Sa				1	2	3	4	5	6	7	8	9	10	11	12	13	14	15	16	17	18	19	20	21	22	23	24	25	26	27	28	29	30	31		Su	M	Tu	W	Th	F	Sa			1	2	3	4	5	7	8	9	10	11	12	13	14	15	16	17	18	19	20	21	22	23	24	25	26	27	28	29	30	31				November: 15- Student days  88 Red Jacket Pkwy., Buffalo, NY 14220 Last revision: 6/9/2025
Su	M	Tu	W	Th	F	Sa																																																																																				
			1	2	3	4																																																																																				
5	6	7	8	9	10	11																																																																																				
12	13	14	15	16	17	18																																																																																				
19	20	21	22	23	24	25																																																																																				
26	27	28	29	30	31																																																																																					
Su	M	Tu	W	Th	F	Sa																																																																																				
		1	2	3	4	5																																																																																				
7	8	9	10	11	12	13																																																																																				
14	15	16	17	18	19	20																																																																																				
21	22	23	24	25	26	27																																																																																				
28	29	30	31																																																																																							

## Remembering Princess

The house feels so dim without you here,  
the sound of your paws no longer tapping on the floor.

There's a melancholy silence that fills the air,  
and my days feel heavy without your warmth.

I sit alone in my room, trying to remember your embrace.

Grief is such a troublesome thing,

A pestering ache that still won't go away.

I shivered at the memory of seeing you there,

No movement, not even a sound.

But then I try to remember all of the treasured moments I had with you,

All of the great times we shared.

Time is so delicate and losing you showed that.

Your loss feels so unfortunate and my world seems so miserable without you,

Yet, I will not let my sorrows shrivel

The joy you brought to my life.

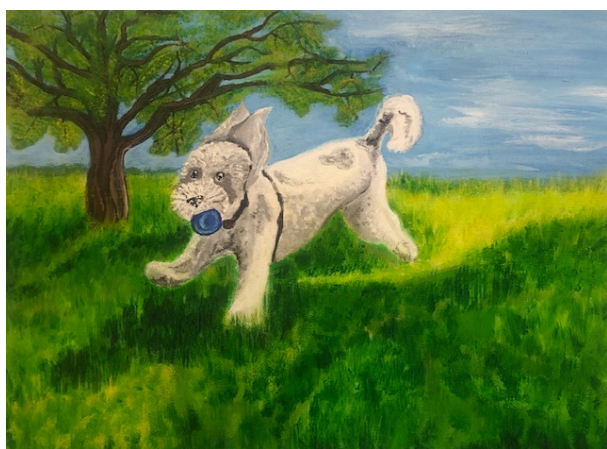
You were more than a pet to me,

You were family.

- Nataliah Quintana '26



- Novella Keem '25



- Kendall Markiewicz '25



- Kendall Markiewicz '25



- Kendall Markiewicz '25

# DECEMBER 2025

Sunday	Monday	Tuesday	Wednesday	Thursday	Friday	Saturday																																																																																											
	<b>1</b> A MMA Charter Day	<b>2</b> B	<b>3</b> C	<b>4</b> D	<b>5</b> E	<b>6</b>																																																																																											
<b>7</b>	<b>8</b> F Immaculate Conception	<b>9</b> A	<b>10</b> B Elective Day	<b>11</b> C	<b>12</b> D Foundation Day (1831)	<b>13</b> Family Winter Event																																																																																											
<b>14</b>	<b>15</b> E	<b>16</b> F	<b>17</b> A	<b>18</b> B Christmas Prayer Svc.  6:30pm Holiday Concert	<b>19</b> No letter day Loving Our Community at Christmas 12:45p Student Dismissal	<b>20</b>																																																																																											
<b>21</b>	<b>22</b> No School/Building closed	<b>23</b> No School/Building closed	<b>24</b> Christmas Eve No School/Building closed	<b>25</b> Christmas Day No School/Building closed	<b>26</b> No School/Building closed	<b>27</b>																																																																																											
<b>28</b>	<b>29</b> No School/Building closed  Winter Basketball Clinic	<b>30</b> No School/Building closed  Winter Basketball Clinic	<b>31</b> New Year's Eve No School/Building closed																																																																																														
	Year totals: 167 student days 175 teacher days	<div> <b>November 2025</b> <table> <tr><th>Su</th><th>M</th><th>Tu</th><th>W</th><th>Th</th><th>F</th><th>Sa</th></tr> <tr><td></td><td></td><td></td><td></td><td></td><td></td><td>1</td></tr> <tr><td>2</td><td>3</td><td>4</td><td>5</td><td>6</td><td>7</td><td>8</td></tr> <tr><td>9</td><td>10</td><td>11</td><td>12</td><td>13</td><td>14</td><td>15</td></tr> <tr><td>16</td><td>17</td><td>18</td><td>19</td><td>20</td><td>21</td><td>22</td></tr> <tr><td>23</td><td>24</td><td>25</td><td>26</td><td>27</td><td>28</td><td>29</td></tr> <tr><td>30</td><td></td><td></td><td></td><td></td><td></td><td></td></tr> </table> </div> <div> <b>January 2026</b> <table> <tr><th>Su</th><th>M</th><th>Tu</th><th>W</th><th>Th</th><th>F</th><th>Sa</th></tr> <tr><td></td><td></td><td></td><td></td><td>1</td><td>2</td><td>3</td></tr> <tr><td>4</td><td>5</td><td>6</td><td>7</td><td>8</td><td>9</td><td>10</td></tr> <tr><td>11</td><td>12</td><td>13</td><td>14</td><td>15</td><td>16</td><td>17</td></tr> <tr><td>18</td><td>19</td><td>20</td><td>21</td><td>22</td><td>23</td><td>24</td></tr> <tr><td>25</td><td>26</td><td>27</td><td>28</td><td>29</td><td>30</td><td>31</td></tr> </table> </div>				Su	M	Tu	W	Th	F	Sa							1	2	3	4	5	6	7	8	9	10	11	12	13	14	15	16	17	18	19	20	21	22	23	24	25	26	27	28	29	30							Su	M	Tu	W	Th	F	Sa					1	2	3	4	5	6	7	8	9	10	11	12	13	14	15	16	17	18	19	20	21	22	23	24	25	26	27	28	29	30	31	December: 15 - Student days  88 Red Jacket Pkwy., Buffalo, NY 14220 Last revision: 6/9/2025
Su	M	Tu	W	Th	F	Sa																																																																																											
						1																																																																																											
2	3	4	5	6	7	8																																																																																											
9	10	11	12	13	14	15																																																																																											
16	17	18	19	20	21	22																																																																																											
23	24	25	26	27	28	29																																																																																											
30																																																																																																	
Su	M	Tu	W	Th	F	Sa																																																																																											
				1	2	3																																																																																											
4	5	6	7	8	9	10																																																																																											
11	12	13	14	15	16	17																																																																																											
18	19	20	21	22	23	24																																																																																											
25	26	27	28	29	30	31																																																																																											



## Censorship

By: Michaela Murphy

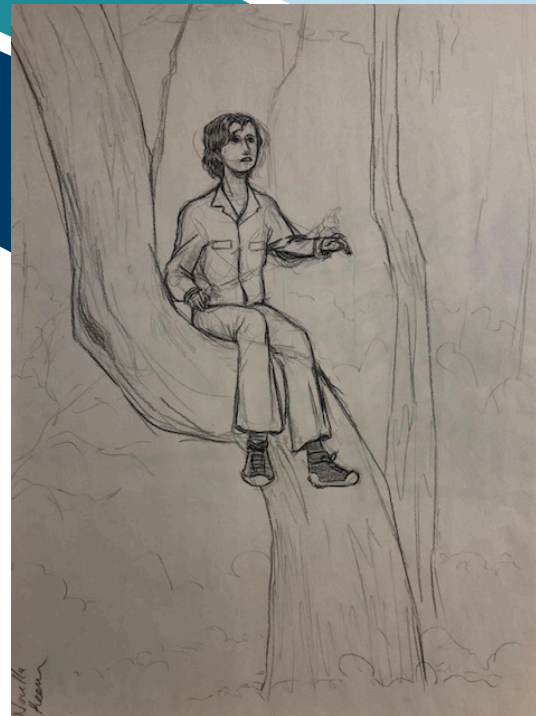


Every book is political  
 Every piece of literature has an alternative meaning  
 Every voice deserves to be heard  
 Every child deserves to be represented  
 Just because we disagree with an idea doesn't make it  
 inherently wrong  
 Doesn't mean we shouldn't let others form their own  
 opinions on it  
 It shouldn't give us the ability as to what people are and  
 aren't allowed to learn about  
 We have the freedom of speech  
 So why aren't we given the freedom to read  
 We aren't we allowed to express ourselves through  
 literature  
 And finally, to hear others stories without being criticized  
 by a dictatorship

- Michaela Murphy '27



- Novella Keem '25



- Novella Keem '25



- Gabby Bauerlein '25

# JANUARY 2026

Sunday	Monday	Tuesday	Wednesday	Thursday	Friday	Saturday																																																																													
				<b>1</b> New Year's Day No School/Building closed	<b>2</b> No School/Building closed	<b>3</b>																																																																													
<b>4</b>	<b>5</b> C Classes Resume	<b>6</b> D	<b>7</b> E	<b>8</b> F	<b>9</b> A	<b>10</b>																																																																													
<b>11</b>	<b>12</b> B	<b>13</b> C	<b>14</b> D AP & Advanced College Courses Mtg.	<b>15</b> E Board of Trustees mtg. 5:00 - 7:00 pm	<b>16</b> F	<b>17</b>																																																																													
<b>18</b>	<b>19</b> ML King Day No School/Building closed	<b>20</b> A	<b>21</b> B	<b>22</b> C Acceptance notification	<b>23</b> D Junior Retreat Meat Raffle	<b>24</b>																																																																													
<b>25</b>	<b>26</b> End of Quarter 2 E	<b>27</b> Semester 2 Begins A	<b>28</b> B	<b>29</b> C	<b>30</b> D 12:45p Student Dismissal 1:00p Faculty/Staff Mtg.	<b>31</b>																																																																													
	Year totals: 167 student days 175 teacher days	<div> <div>December 2025</div> <table> <tr><th>Su</th><th>M</th><th>Tu</th><th>W</th><th>Th</th><th>F</th><th>Sa</th></tr> <tr><td></td><td>1</td><td>2</td><td>3</td><td>4</td><td>5</td><td>6</td></tr> <tr><td>7</td><td>8</td><td>9</td><td>10</td><td>11</td><td>12</td><td>13</td></tr> <tr><td>14</td><td>15</td><td>16</td><td>17</td><td>18</td><td>19</td><td>20</td></tr> <tr><td>21</td><td>22</td><td>23</td><td>24</td><td>25</td><td>26</td><td>27</td></tr> <tr><td>28</td><td>29</td><td>30</td><td>31</td><td></td><td></td><td></td></tr> </table> </div> <div> <div>February 2026</div> <table> <tr><th>Su</th><th>M</th><th>Tu</th><th>W</th><th>Th</th><th>F</th><th>Sa</th></tr> <tr><td>1</td><td>2</td><td>3</td><td>4</td><td>5</td><td>6</td><td>7</td></tr> <tr><td>8</td><td>9</td><td>10</td><td>11</td><td>12</td><td>13</td><td>14</td></tr> <tr><td>15</td><td>16</td><td>17</td><td>18</td><td>19</td><td>20</td><td>21</td></tr> <tr><td>22</td><td>23</td><td>24</td><td>25</td><td>26</td><td>27</td><td>28</td></tr> </table> </div>				Su	M	Tu	W	Th	F	Sa		1	2	3	4	5	6	7	8	9	10	11	12	13	14	15	16	17	18	19	20	21	22	23	24	25	26	27	28	29	30	31				Su	M	Tu	W	Th	F	Sa	1	2	3	4	5	6	7	8	9	10	11	12	13	14	15	16	17	18	19	20	21	22	23	24	25	26	27	28	January: 19 - Student days  88 Red Jacket Pkwy., Buffalo, NY 14220 Last revision: 6/9/2025
Su	M	Tu	W	Th	F	Sa																																																																													
	1	2	3	4	5	6																																																																													
7	8	9	10	11	12	13																																																																													
14	15	16	17	18	19	20																																																																													
21	22	23	24	25	26	27																																																																													
28	29	30	31																																																																																
Su	M	Tu	W	Th	F	Sa																																																																													
1	2	3	4	5	6	7																																																																													
8	9	10	11	12	13	14																																																																													
15	16	17	18	19	20	21																																																																													
22	23	24	25	26	27	28																																																																													

## What Do I Do with a Difference?

I give a difference the acknowledgement it deserves

I don't wait for it to disappear

Its stubbornness won't allow it to

Differences are beautiful

They make us unique as humans

I appreciate the opportunity to see that we are not all the same

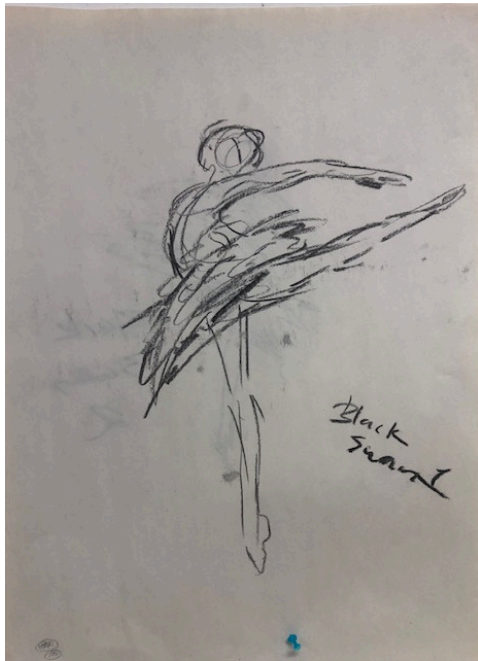
We were never meant to be

The different kinds of people I have met are equally enchanting

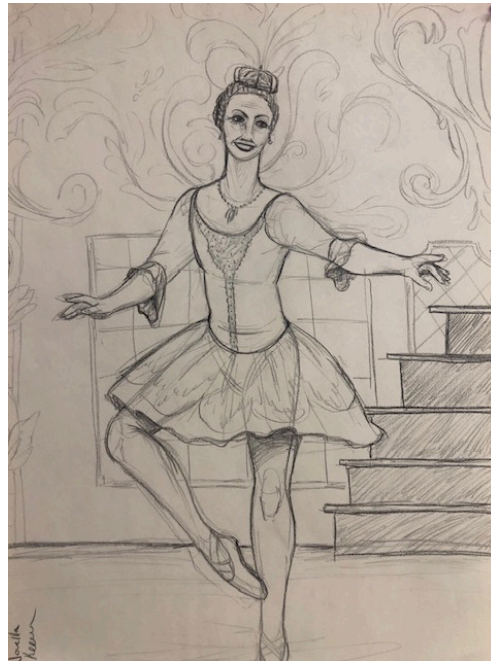
We don't speak to our differences

But rather act on them and display affection towards the differences of others

- Lauren Szpylman '26



- Novella Keem '25



- Novella Keem '25



- Novella Keem '25

## Walking Blindfolded

Life in which was always to honest to the  
eyes,

Life in which was always full of horrors and  
dispute,

Are we ready for this Dispute?

Your worlds against mine?

Are you ready to walk blind?

Blinded as you write the words, the words  
that may change lives, but will they change  
mine?

Are you ready for the feude they will bring to  
you?

You'll be blinded by the binding, begging for  
freedom.

Will they ever even see or listen?

While your waking blind, will they even stop  
to listen.

No one see's my binding thriving.

By Abby McCarthy

- Abby McCarthy '27

# FEBRUARY 2026

Sunday	Monday	Tuesday	Wednesday	Thursday	Friday	Saturday																																																																																				
<b>1</b>	<b>2</b> Groundhog Day E	<b>3</b> F	<b>4</b> A SEM 1 Honors Assembly Ring Day Practice	<b>5</b> B Ring Day	<b>6</b> C	<b>7</b>																																																																																				
<b>8</b>	<b>9</b> No School/Building closed Mental Health Monday	<b>10</b> D Spirit Week	<b>11</b> E Spirit Week  First House of Mercy opens in Buffalo (1858)	<b>12</b> Lincoln's B-Day F Spirit Week	<b>13</b> A Spirit Week	<b>14</b> Valentines Day																																																																																				
<b>15</b>	<b>16</b> Presidents' Day No School/Building closed	<b>17</b> Chinese Lunar New Year No School Winter Break	<b>18</b> No School Winter Break Winter Magic Camp Ash Wednesday	<b>19</b> No School Winter Break Winter Magic Camp	<b>20</b> No School Winter Break Winter Magic Camp	<b>21</b>																																																																																				
<b>22</b>	<b>23</b> B	<b>24</b> C	<b>25</b> D Lunar NY Celebration	<b>26</b> E Admissions Night	<b>27</b> F	<b>28</b>																																																																																				
						 																																																																																				
	Year totals: 167 student days 175 teacher days	<div> <b>January 2026</b> <table> <tr><th>Su</th><th>M</th><th>Tu</th><th>W</th><th>Th</th><th>F</th><th>Sa</th></tr> <tr><td></td><td></td><td></td><td></td><td>1</td><td>2</td><td>3</td></tr> <tr><td>4</td><td>5</td><td>6</td><td>7</td><td>8</td><td>9</td><td>10</td></tr> <tr><td>11</td><td>12</td><td>13</td><td>14</td><td>15</td><td>16</td><td>17</td></tr> <tr><td>18</td><td>19</td><td>20</td><td>21</td><td>22</td><td>23</td><td>24</td></tr> <tr><td>25</td><td>26</td><td>27</td><td>28</td><td>29</td><td>30</td><td>31</td></tr> </table> </div> <div> <b>March 2026</b> <table> <tr><th>Su</th><th>M</th><th>Tu</th><th>W</th><th>Th</th><th>F</th><th>Sa</th></tr> <tr><td>1</td><td>2</td><td>3</td><td>4</td><td>5</td><td>6</td><td>7</td></tr> <tr><td>8</td><td>9</td><td>10</td><td>11</td><td>12</td><td>13</td><td>14</td></tr> <tr><td>15</td><td>16</td><td>17</td><td>18</td><td>19</td><td>20</td><td>21</td></tr> <tr><td>22</td><td>23</td><td>24</td><td>25</td><td>26</td><td>27</td><td>28</td></tr> <tr><td>29</td><td>30</td><td>31</td><td></td><td></td><td></td><td></td></tr> </table> </div>				Su	M	Tu	W	Th	F	Sa					1	2	3	4	5	6	7	8	9	10	11	12	13	14	15	16	17	18	19	20	21	22	23	24	25	26	27	28	29	30	31	Su	M	Tu	W	Th	F	Sa	1	2	3	4	5	6	7	8	9	10	11	12	13	14	15	16	17	18	19	20	21	22	23	24	25	26	27	28	29	30	31					February: 14- Student days  88 Red Jacket Pkwy., Buffalo, NY 14220 Last revision: 6/9/2025
Su	M	Tu	W	Th	F	Sa																																																																																				
				1	2	3																																																																																				
4	5	6	7	8	9	10																																																																																				
11	12	13	14	15	16	17																																																																																				
18	19	20	21	22	23	24																																																																																				
25	26	27	28	29	30	31																																																																																				
Su	M	Tu	W	Th	F	Sa																																																																																				
1	2	3	4	5	6	7																																																																																				
8	9	10	11	12	13	14																																																																																				
15	16	17	18	19	20	21																																																																																				
22	23	24	25	26	27	28																																																																																				
29	30	31																																																																																								

## Broken Display

The greatest books of one time  
sat on a display.

A display made of golden promises and truth  
and most of all, success.

Though, time comes to a halt,  
and the foundation that a display was put on  
was weak.

Rather than promise and truth with the important success,  
the foundation was full of censorship and lies,  
but most of all, failure.

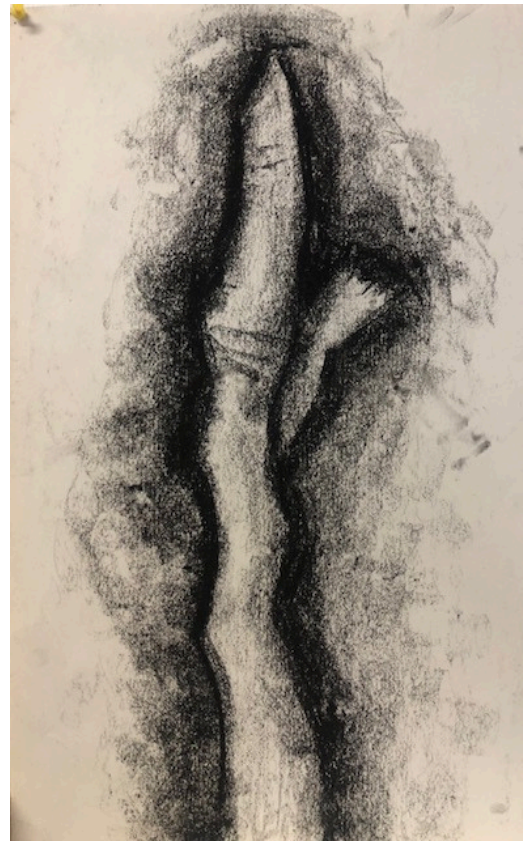
Why would the system of books aiming to speak the truth want  
Fail?

Why would they want  
Lies?

So on a weak foundation, this strong,  
golden display falters and breaks.  
A display made to stand up and speak out  
is put down.

So tell me why, would you, I am curious.  
Or am I not allowed to be such?

- Lily Moritz '27



- Novella Keem '25



- Novella Keem '25



Novella Keem '25 -

# MARCH 2026

Sunday	Monday	Tuesday	Wednesday	Thursday	Friday	Saturday																																																																													
<b>1</b>	<b>2</b> A First Day of World Languages week	<b>3</b> B	<b>4</b> C Connect Life Blood Drive St. Patrick's Day Craft Night	<b>5</b> D International Dinner	<b>6</b> E Senior Retreat	<b>7</b>																																																																													
<b>8</b> Daylight Saving	<b>9</b> F	<b>10</b> A	<b>11</b> B	<b>12</b> C	<b>13</b> D 12:45p Student Dismissal 1:00p Faculty/Staff Mtg.	<b>14</b>																																																																													
<b>15</b>	<b>16</b> No School/Building closed Mental Health Monday  Spring Sports begin	<b>17</b> St. Patrick's Day E	<b>18</b> F	<b>19</b> A Board of Trustees mtg. 5:00 - 7:00 pm	<b>20</b> B	<b>21</b>																																																																													
<b>22</b>	<b>23</b> C	<b>24</b> D	<b>25</b> E Lent Reconciliation	<b>26</b> F Easter Prayer Service	<b>27</b> A	<b>28</b>																																																																													
<b>29</b> Palm Sunday	<b>30</b> B	<b>31</b> C NHS Rehearsal				 																																																																													
	Year totals: 167 student days 175 teacher days	<div> <b>February 2026</b> <table> <tr><th>Su</th><th>M</th><th>Tu</th><th>W</th><th>Th</th><th>F</th><th>Sa</th></tr> <tr><td>1</td><td>2</td><td>3</td><td>4</td><td>5</td><td>6</td><td>7</td></tr> <tr><td>8</td><td>9</td><td>10</td><td>11</td><td>12</td><td>13</td><td>14</td></tr> <tr><td>15</td><td>16</td><td>17</td><td>18</td><td>19</td><td>20</td><td>21</td></tr> <tr><td>22</td><td>23</td><td>24</td><td>25</td><td>26</td><td>27</td><td>28</td></tr> </table> </div> <div> <b>April 2026</b> <table> <tr><th>Su</th><th>M</th><th>Tu</th><th>W</th><th>Th</th><th>F</th><th>Sa</th></tr> <tr><td></td><td></td><td></td><td>1</td><td>2</td><td>3</td><td>4</td></tr> <tr><td>5</td><td>6</td><td>7</td><td>8</td><td>9</td><td>10</td><td>11</td></tr> <tr><td>12</td><td>13</td><td>14</td><td>15</td><td>16</td><td>17</td><td>18</td></tr> <tr><td>19</td><td>20</td><td>21</td><td>22</td><td>23</td><td>24</td><td>25</td></tr> <tr><td>26</td><td>27</td><td>28</td><td>29</td><td>30</td><td></td><td></td></tr> </table> </div>				Su	M	Tu	W	Th	F	Sa	1	2	3	4	5	6	7	8	9	10	11	12	13	14	15	16	17	18	19	20	21	22	23	24	25	26	27	28	Su	M	Tu	W	Th	F	Sa				1	2	3	4	5	6	7	8	9	10	11	12	13	14	15	16	17	18	19	20	21	22	23	24	25	26	27	28	29	30			March: 21 - Student days  88 Red Jacket Pkwy., Buffalo, NY 14220 Last revision: 6/9/2025
Su	M	Tu	W	Th	F	Sa																																																																													
1	2	3	4	5	6	7																																																																													
8	9	10	11	12	13	14																																																																													
15	16	17	18	19	20	21																																																																													
22	23	24	25	26	27	28																																																																													
Su	M	Tu	W	Th	F	Sa																																																																													
			1	2	3	4																																																																													
5	6	7	8	9	10	11																																																																													
12	13	14	15	16	17	18																																																																													
19	20	21	22	23	24	25																																																																													
26	27	28	29	30																																																																															

## Words that Matter

Why should we be deprived of the joy of literature because society can't stomach the words of others?

Ridding the world of the beauty of imagination and fantasy quiets the creativity living inside of us.

We get lost between the pages of our favorite stories to escape the daunting realities of our harsh world.

While the government is too preoccupied filtering out the words of writers from the ears of the people they fail to realize those words are slowly bleeding into society.

They work to suppress our knowledge by silencing their voices.

Never will I understand the need to ban books, throughout my lifetime I have read many books that have at some point been either banned or challenged and those are the ones that have forever impacted me.

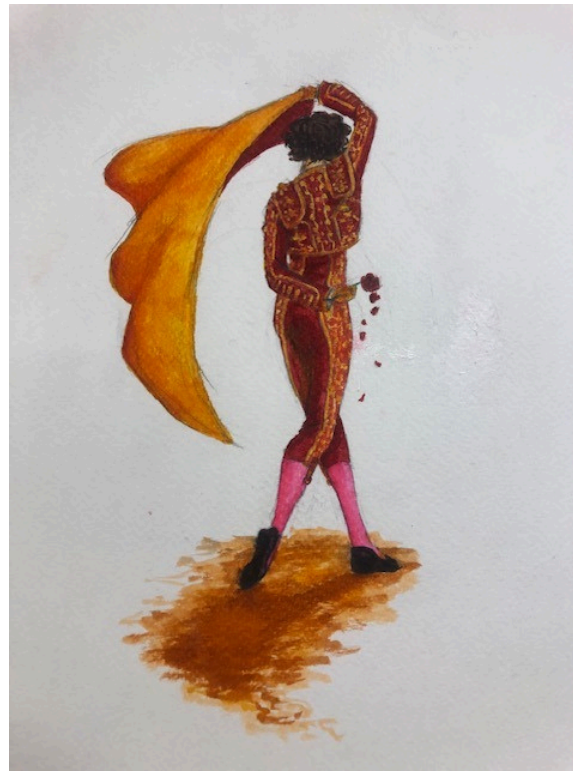
The thought of others being unable to experience their message is maddening.

Writers should never be punished for having the bravery to speak the words that society is afraid to.

- Leigha Przybyszewski '27



- Novella Keem '25





- Novella Keem '25



- Kendall Markiewicz '25

# APRIL 2026

Sunday	Monday	Tuesday	Wednesday	Thursday	Friday	Saturday																																																																																											
<div> </div>			<b>1</b> D NHS Induction, 60-Min Early Schedule	<b>2</b> Holy Thursday No School/Building closed	<b>3</b> Good Friday No School/Building closed	<b>4</b>																																																																																											
<b>5</b> Easter	<b>6</b> Easter Monday No School/Building closed	<b>7</b> No School Easter Break	<b>8</b> No School Easter Break	<b>9</b> No School Easter Break	<b>10</b> No School Easter Break	<b>11</b>																																																																																											
<b>12</b>	<b>13</b> E	<b>14</b> End of Quarter 3 F	<b>15</b> A	<b>16</b> B	<b>17</b> C	<b>18</b>																																																																																											
<b>19</b>	<b>20</b> D	<b>21</b> E	<b>22</b> Earth Day F	<b>23</b> A	<b>24</b> No School for Students Faculty/Staff Retreat  The McAuley	<b>25</b>																																																																																											
<b>26</b>	<b>27</b> B	<b>28</b> C	<b>29</b> D	<b>30</b> E Spring Open House																																																																																													
	Year totals: 167 student days 175 teacher days	<div><div>March 2026</div><table><tr><th>Su</th><th>M</th><th>Tu</th><th>W</th><th>Th</th><th>F</th><th>Sa</th></tr><tr><td>1</td><td>2</td><td>3</td><td>4</td><td>5</td><td>6</td><td>7</td></tr><tr><td>8</td><td>9</td><td>10</td><td>11</td><td>12</td><td>13</td><td>14</td></tr><tr><td>15</td><td>16</td><td>17</td><td>18</td><td>19</td><td>20</td><td>21</td></tr><tr><td>22</td><td>23</td><td>24</td><td>25</td><td>26</td><td>27</td><td>28</td></tr><tr><td>29</td><td>30</td><td>31</td><td></td><td></td><td></td><td></td></tr></table></div> <div><div>May 2026</div><table><tr><th>Su</th><th>M</th><th>Tu</th><th>W</th><th>Th</th><th>F</th><th>Sa</th></tr><tr><td></td><td></td><td></td><td></td><td></td><td>1</td><td>2</td></tr><tr><td>3</td><td>4</td><td>5</td><td>6</td><td>7</td><td>8</td><td>9</td></tr><tr><td>10</td><td>11</td><td>12</td><td>13</td><td>14</td><td>15</td><td>16</td></tr><tr><td>17</td><td>18</td><td>19</td><td>20</td><td>21</td><td>22</td><td>23</td></tr><tr><td>24</td><td>25</td><td>26</td><td>27</td><td>28</td><td>29</td><td>30</td></tr><tr><td>31</td><td></td><td></td><td></td><td></td><td></td><td></td></tr></table></div> <td><div>April: 1 - PD day 14 - Student days 88 Red Jacket Pkwy., Buffalo, NY 14220 Last revision: 6/9/2025</div></td>				Su	M	Tu	W	Th	F	Sa	1	2	3	4	5	6	7	8	9	10	11	12	13	14	15	16	17	18	19	20	21	22	23	24	25	26	27	28	29	30	31					Su	M	Tu	W	Th	F	Sa						1	2	3	4	5	6	7	8	9	10	11	12	13	14	15	16	17	18	19	20	21	22	23	24	25	26	27	28	29	30	31							<div>April: 1 - PD day 14 - Student days 88 Red Jacket Pkwy., Buffalo, NY 14220 Last revision: 6/9/2025</div>
Su	M	Tu	W	Th	F	Sa																																																																																											
1	2	3	4	5	6	7																																																																																											
8	9	10	11	12	13	14																																																																																											
15	16	17	18	19	20	21																																																																																											
22	23	24	25	26	27	28																																																																																											
29	30	31																																																																																															
Su	M	Tu	W	Th	F	Sa																																																																																											
					1	2																																																																																											
3	4	5	6	7	8	9																																																																																											
10	11	12	13	14	15	16																																																																																											
17	18	19	20	21	22	23																																																																																											
24	25	26	27	28	29	30																																																																																											
31																																																																																																	

# A Humble Schoolhouse

I walk through the door set ajar  
Where I can escape the chillness  
While fading into the warm air

Down the halls that once were charming  
Greeted by the teacher with the philosophic stare  
Into the classroom bright lights buzzing

Despite a now tarnished look  
It is here I now feel a glow  
Generous beauty quietly on show

- Elena Ellicott '26



- Mercy backyard photo by Sarah Peron '26




Novella Keem '25 -



- Novella Keem '25

# MAY 2026

Sunday	Monday	Tuesday	Wednesday	Thursday	Friday	Saturday																																																																																				
<div> Mercy Education System of the Americas</div>					<b>1</b> F Alumnae Induction Honors Awards Seniors' last day of classes	<b>2</b> SAT Exam																																																																																				
<b>3</b> Mother-Daughter Mass and Breakfast	<b>4</b> A AP Exams	<b>5</b> Cinco de Mayo B AP Exams	<b>6</b> C AP Exams	<b>7</b> D AP Exams	<b>8</b> E AP Exams	<b>9</b>																																																																																				
<b>10</b> Mother's Day	<b>11</b> F AP Exams	<b>12</b> A AP Exams	<b>13</b> B AP Exams	<b>14</b> C AP Exams  6:30pm Spring Concert	<b>15</b> D AP Exams	<b>16</b> Armed Forces Day 7th Grade Exam																																																																																				
<b>17</b>	<b>18</b> E Baccalaureate	<b>19</b> F	<b>20</b> A Graduation	<b>21</b> B	<b>22</b> No School/Building closed Memorial Weekend	<b>23</b>																																																																																				
<b>24</b>	<b>25</b> Memorial Day No School/Building closed	<b>26</b> C	<b>27</b> D Sports Banquet	<b>28</b> E	<b>29</b> F	<b>30</b>																																																																																				
<b>31</b>	Year totals: 167 student days 175 teacher days	<div><div>April 2026</div><table><tr><th>Su</th><th>M</th><th>Tu</th><th>W</th><th>Th</th><th>F</th><th>Sa</th></tr><tr><td></td><td></td><td></td><td>1</td><td>2</td><td>3</td><td>4</td></tr><tr><td>5</td><td>6</td><td>7</td><td>8</td><td>9</td><td>10</td><td>11</td></tr><tr><td>12</td><td>13</td><td>14</td><td>15</td><td>16</td><td>17</td><td>18</td></tr><tr><td>19</td><td>20</td><td>21</td><td>22</td><td>23</td><td>24</td><td>25</td></tr><tr><td>26</td><td>27</td><td>28</td><td>29</td><td>30</td><td></td><td></td></tr></table></div> <div><div>June 2026</div><table><tr><th>Su</th><th>M</th><th>Tu</th><th>W</th><th>Th</th><th>F</th><th>Sa</th></tr><tr><td></td><td></td><td>1</td><td>2</td><td>3</td><td>4</td><td>5</td></tr><tr><td>7</td><td>8</td><td>9</td><td>10</td><td>11</td><td>12</td><td>13</td></tr><tr><td>14</td><td>15</td><td>16</td><td>17</td><td>18</td><td>19</td><td>20</td></tr><tr><td>21</td><td>22</td><td>23</td><td>24</td><td>25</td><td>26</td><td>27</td></tr><tr><td>28</td><td>29</td><td>30</td><td></td><td></td><td></td><td></td></tr></table></div> <td><div>May: 19 - Student days</div><div>88 Red Jacket Pkwy., Buffalo, NY 14220</div><div>Last revision: 6/9/2025</div></td>				Su	M	Tu	W	Th	F	Sa				1	2	3	4	5	6	7	8	9	10	11	12	13	14	15	16	17	18	19	20	21	22	23	24	25	26	27	28	29	30			Su	M	Tu	W	Th	F	Sa			1	2	3	4	5	7	8	9	10	11	12	13	14	15	16	17	18	19	20	21	22	23	24	25	26	27	28	29	30					<div>May: 19 - Student days</div> <div>88 Red Jacket Pkwy., Buffalo, NY 14220</div> <div>Last revision: 6/9/2025</div>
Su	M	Tu	W	Th	F	Sa																																																																																				
			1	2	3	4																																																																																				
5	6	7	8	9	10	11																																																																																				
12	13	14	15	16	17	18																																																																																				
19	20	21	22	23	24	25																																																																																				
26	27	28	29	30																																																																																						
Su	M	Tu	W	Th	F	Sa																																																																																				
		1	2	3	4	5																																																																																				
7	8	9	10	11	12	13																																																																																				
14	15	16	17	18	19	20																																																																																				
21	22	23	24	25	26	27																																																																																				
28	29	30																																																																																								

## Writing About My Life

Type, type, type.

No.

Delete.

Blank.

Type, type type.

Unacceptable.

Delete.

Blank.

Type...type...type.

Perfect.

Ladies and gentlemen, here is a story for you all.

If you find that it reminds you of a fairytale,

You are absolutely right.

It's not based on opinions.

It's not based on religion.

It's not based on life.

It's not based on reality.

It's not based on me.

No need to agree or disagree.

No need to listen or ignore.

No need to cover your ears.

No need to protect your innocent minds.

I wrote about my life.

A life that I've never had.

A life that I can never have.

A life that doesn't exist.

But, a life that I can write about.

- Veronica Friol '27




- Novella Keem '25



- Novella Keem '25

# JUNE 2026

Sunday	Monday	Tuesday	Wednesday	Thursday	Friday	Saturday																																																																																											
	<b>1</b> A	<b>2</b> B	<b>3</b> C	<b>4</b> D	<b>5</b> No letter day Leadership Academy Expo Junior Awards Field Day	<b>6</b>																																																																																											
<b>7</b>	<b>8</b> Final Assessments	<b>9</b> Final Assessments	<b>10</b> Final Assessments	<b>11</b> End of Quarter 4 Final Assessments	<b>12</b> Grading & Professional Development	<b>13</b>																																																																																											
<b>14</b> Flag Day	<b>15</b> Grading & Professional Development	<b>16</b> Grading & Professional Development	<b>17</b> Grading & Professional Development	<b>18</b> Board of Trustees mtg. 5:00 - 7:00 pm	<b>19</b> Juneteenth Building Closed	<b>20</b>																																																																																											
<b>21</b> Father's Day	<b>22</b> Basketball Camp	<b>23</b> Basketball Camp	<b>24</b> Basketball Camp	<b>25</b> Basketball Camp	<b>26</b>	<b>27</b>																																																																																											
<b>28</b>	<b>29</b>	<b>30</b>																																																																																															
	Year totals: 167 student days 175 teacher days	<div> <div>May 2026</div> <table> <tr><th>Su</th><th>M</th><th>Tu</th><th>W</th><th>Th</th><th>F</th><th>Sa</th></tr> <tr><td></td><td></td><td></td><td></td><td></td><td>1</td><td>2</td></tr> <tr><td>3</td><td>4</td><td>5</td><td>6</td><td>7</td><td>8</td><td>9</td></tr> <tr><td>10</td><td>11</td><td>12</td><td>13</td><td>14</td><td>15</td><td>16</td></tr> <tr><td>17</td><td>18</td><td>19</td><td>20</td><td>21</td><td>22</td><td>23</td></tr> <tr><td>24</td><td>25</td><td>26</td><td>27</td><td>28</td><td>29</td><td>30</td></tr> <tr><td>31</td><td></td><td></td><td></td><td></td><td></td><td></td></tr> </table> </div> <div> <div>July 2026</div> <table> <tr><th>Su</th><th>M</th><th>Tu</th><th>W</th><th>Th</th><th>F</th><th>Sa</th></tr> <tr><td></td><td></td><td></td><td>1</td><td>2</td><td>3</td><td>4</td></tr> <tr><td>5</td><td>6</td><td>7</td><td>8</td><td>9</td><td>10</td><td>11</td></tr> <tr><td>12</td><td>13</td><td>14</td><td>15</td><td>16</td><td>17</td><td>18</td></tr> <tr><td>19</td><td>20</td><td>21</td><td>22</td><td>23</td><td>24</td><td>25</td></tr> <tr><td>26</td><td>27</td><td>28</td><td>29</td><td>30</td><td>31</td><td></td></tr> </table> </div>				Su	M	Tu	W	Th	F	Sa						1	2	3	4	5	6	7	8	9	10	11	12	13	14	15	16	17	18	19	20	21	22	23	24	25	26	27	28	29	30	31							Su	M	Tu	W	Th	F	Sa				1	2	3	4	5	6	7	8	9	10	11	12	13	14	15	16	17	18	19	20	21	22	23	24	25	26	27	28	29	30	31		June: 4 - PD days 9 - Student days 88 Red Jacket Pkwy., Buffalo, NY 14220 Last revision: 6/9/2025
Su	M	Tu	W	Th	F	Sa																																																																																											
					1	2																																																																																											
3	4	5	6	7	8	9																																																																																											
10	11	12	13	14	15	16																																																																																											
17	18	19	20	21	22	23																																																																																											
24	25	26	27	28	29	30																																																																																											
31																																																																																																	
Su	M	Tu	W	Th	F	Sa																																																																																											
			1	2	3	4																																																																																											
5	6	7	8	9	10	11																																																																																											
12	13	14	15	16	17	18																																																																																											
19	20	21	22	23	24	25																																																																																											
26	27	28	29	30	31																																																																																												



- Mercy Grotto photography by Riley Melligan '26



# 2025-2026 Mount Mercy Academy Instructional Calendar



**School Day:** 7:45 a.m. - 2:45 p.m.

88 Red Jacket Parkway

Buffalo, NY 14220

(716) 825-8796

**Students must arrive by 7:45 a.m.**

Teacher Days = 175 (incl. 8 PD days)

Student Days = 167

## August

26 New Teacher Orientation  
27 Professional Development - No students  
28 Professional Development - No students  
29 Labor Day Weekend - Building closed

2 PD

## September

1 Labor Day - No School - Building closed  
2 Student Orientation  
3 First day of classes

1 PD + 20 Student Days = 21

## October

8 Testing Day (gr. 9-11) College Visit Day (gr. 12)  
10 Academy day off - No School - Building closed  
13 Indigenous Peoples' Day - No School - Building Closed

21 Student Days

## November

2 Daylight Saving  
7 12:45 Student Dismissal - Faculty meeting to follow  
10 Mental Health Monday - No School - Building closed  
11 Veterans Day - No School - Building closed  
26-28 Thanksgiving Break - No School - Building closed

15 Student days

## December

19 12:45 Student Dismissal  
22-31 Christmas Break - No School - Building closed

15 Student Days

## January 2026

Su	M	Tu	W	Th	F	Sa
				1	2	3
4	5	6	7	8	9	10
11	12	13	14	15	16	17
18	19	20	21	22	23	24
25	26	27	28	29	30	31

## February 2026

Su	M	Tu	W	Th	F	Sa
1	2	3	4	5	6	7
8	9	10	11	12	13	14
15	16	17	18	19	20	21
22	23	24	25	26	27	28

## March 2026

Su	M	Tu	W	Th	F	Sa
1	2	3	4	5	6	7
8	9	10	11	12	13	14
15	16	17	18	19	20	21
22	23	24	25	26	27	28
29	30	31				

## April 2026

Su	M	Tu	W	Th	F	Sa
			1	2	3	4
5	6	7	8	9	10	11
12	13	14	15	16	17	18
19	20	21	22	23	24	25
26	27	28	29	30		

## May 2026

Su	M	Tu	W	Th	F	Sa
					1	2
3	4	5	6	7	8	9
10	11	12	13	14	15	16
17	18	19	20	21	22	23
24	25	26	27	28	29	30
31						

## June 2026

Su	M	Tu	W	Th	F	Sa
	1	2	3	4	5	6
7	8	9	10	11	12	13
14	15	16	17	18	19	20
21	22	23	24	25	26	27
28	29	30				

## January

1-2 Christmas Break - Building closed  
19 Martin Luther King Jr. Day - No School - Building closed  
30 12:45 Student Dismissal - Faculty meeting to follow

19 Student Days

## February

9 Mental Health Monday - Building closed  
16 President's Day - No School - Building closed  
17-20 Winter break - No students

14 Student Days

## March

8 Daylight Saving  
13 12:45 Student Dismissal - Faculty meeting to follow  
16 Mental Health Monday - No School - Building closed

21 Student Days

## April

2-6 Easter Break - No School - Building closed  
7-10 Easter Break - No school  
24 Professional Development/Retreat - No students

1 PD + 14 Student Days = 15

## May

22-25 Memorial Day Weekend - Building closed

19 Student Days

## June

11 Last day for students  
12-17 Professional Development - No students  
19 Juneteenth - Building closed

4 PD + 9 Student Days = 13

Teacher Days = 175 (incl. 8 PD days)

Student Days = 167

Last Edit = 6/5/2025



Mount Mercy Academy | 88 Red Jacket Pkwy, Buffalo, NY 14220 | P: 716-825-8796 | F: 716-825-0976 | [info@mtmercy.org](mailto:info@mtmercy.org) | [www.mtmercy.org](http://www.mtmercy.org)